



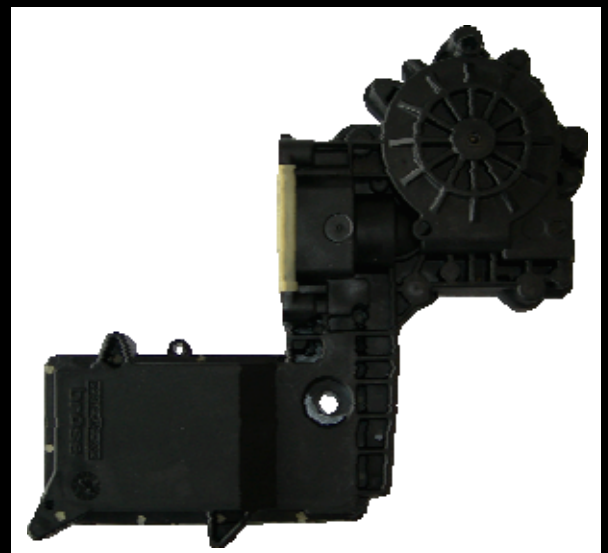
PPG Fiber Glass Europe

ChopVantage® HP 3780

ChopVantage® HP 3780 is designed for reinforcement of thermoplastic polyester. ChopVantage® HP 3780 contributes to high reinforcement properties in styrenic copolymers, polycarbonate resins, PBT, PET, POM and PPS. End-use applications are found in transportation, electrical and electronic appliance and computer housings and components.

USER BENEFITS:

- Compatible with various resin systems and processing methods; such as PBT, PC, PET, POM and PPS.
- Exhibits good strength retention after wet and drying heat aging.
- Imparts high dielectric strength to PBT for electrical applications such as connectors, fuse block holders and other non-current carrying components.
- Excellent colour characteristics.
- Superior dry flow performance which contributes to high compounding rates.
- Wide range of versatility with respect to feeding and handling.
- Provides an optimum balance of sizing functions.
- EU and FDA compliance for repeated-use food contact applications.
- German Potable water contact compliance.
- Please contact your PPG representative for more details.





PPG Fiber Glass Europe

ChopVantage® HP 3780

PRODUCT DESCRIPTION.

Property	Description
Type of Fiber	E-Glass
Fiber Diameter, nominal, µm	13
Standard Fiber Length	4.5 mm

PRODUCT INFORMATION.

Property	Test Method	Unit	PBT	PET
Tensile Strength	ISO 527	Mpa	125	170
Tensile Modulus	ISO 527	GPa	9.0	15
Flexural Strength	ISO 178	MPa	190	270
Flexural Modulus	ISO 178	GPa	7.5	16
Charpy, unnotched	ISO 179	kJ/m ²	60	30
Charpy, notched	ISO 179	kJ/m ²	12	10
Izod, unnotched	ISO 180	kJ/m ²	50	33
Izod, notched	ISO 180	kJ/m ²	10	13
Glass Content	ISO 1172	wt%	30	40

This data was obtained during tests at room temperature from injection molded test bars. Twin screw extrusion compounding with downstream addition of glass fibers was used to produce the molding granules. Values should be considered as guides only and may vary due to processing differences.

PACKAGING.

ChopVantage® HP 3780 is supplied in octabins or big bags containing 1000 kg of chopped strands. The packaging is designed to allow bottom discharge of the chopped strands. Packaging in smaller quantities is available on request.

STORAGE.

ChopVantage® HP 3780 should preferably be stored at room temperature and at a relative humidity of 65% ± 10%. To avoid problems with humidity or static electricity the glass fibers should be conditioned in the working area prior to use. If the contents of a packaging unit are only partly used, the packing should be re-sealed.

A First-In-First-Out (FIFO) stock control system is recommended to minimize the influence of storage conditions.



PPG Fiber Glass Europe

Email: fgeurope@ppg.com

Telephone: +31 598 313 216

Fax: +31 598 313 649

Internet: www.ppgfiberglass.com