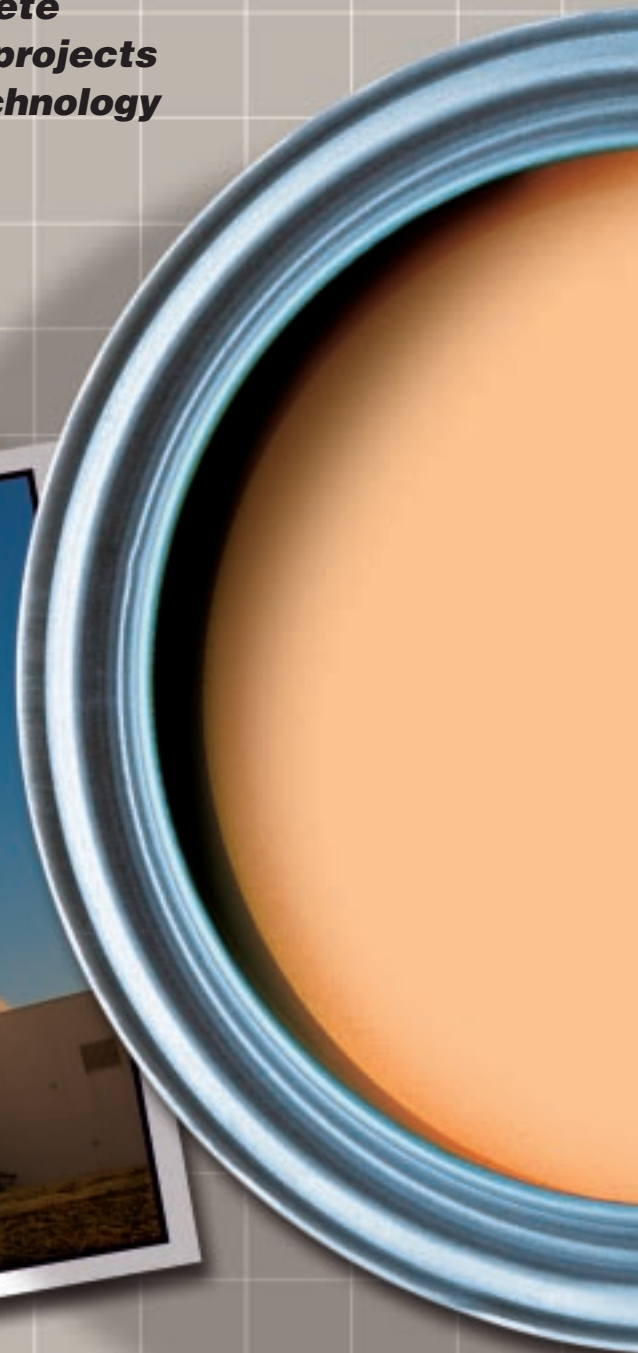




**PERMA-CRETE**®  
MASONRY SYSTEMS

***Feel confident when using PPG Perma-Crete High Build Masonry System products for projects and applications that demand superior technology and quality.***

- Designed for a wide range of application solutions
- Upgrade from traditional acrylic systems
- Ideal for Tilt-up Concrete, Brick, Concrete Block, Stucco & Masonry substrates
- Superior efflorescence and alkali resistant properties
- Products protect and beautify your project



**All Perma-Crete® High Build products are ideal for high-rise apartments and condominiums, large tilt-up warehouses, concrete parking garage overheads, hotels, resorts and residential homes.**



**PERMA-CRETE — 4-2 High Build Acrylic Primer, 4-22 High Build Acrylic Topcoat**

- 100% Acrylic Latex
- Alkali and efflorescence resistant
- Apply to surfaces with pH of 6 to 13 (as early as 7 days)\*
- Provides durable exterior coating
- Low temperature application: PASS at 35°F @ 6mil
- Wind Driven Rain: Blockfiller/Primer/1 Coat Topcoat: PASS (TT-C-555-B)
- Moisture Permeability – 2.8 perms
- Water Vapor Transmission – 1.3 grains/sq.ft/hour (ASTM-D1653)
- Flexibility: PASS (ASTM D1737, 180 bend, 1/8" Mandril)
- Alkali Resistant (4% NaOH) – PASS
- Mildew Resistant on the dry paint film
- Available only on 4-22 High Build Acrylic Topcoat:  
*Elongation: 244% – 11mil DFT*



**PERMA-CRETE — 4-100 LTC Block Surfacer**

- 100% Acrylic lightweight formula – Easy to carry around job site
- Alkali and efflorescence resistant
- Apply to surfaces with pH of 6 to 13 (as early as 7 days)\*
- Low temperature application to 35°F
- Versatile primer/block filler – Smooths out surfaces for topcoating
- Excellent filling properties
- Suitable under a variety of topcoats



**PERMA-CRETE — 4-808 Exterior Acrylic Clear Masonry Sealer, 4-809 Exterior Acrylic Pigmented Masonry Sealer**

- Binds chalk residue to the substrate
- Penetrates and seals masonry surfaces
- Fast dry – quick recoat time
- Excellent adhesion

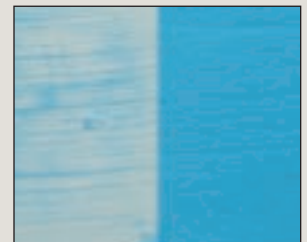


**PERMA-CRETE — 4-603 Alkali Resistant Primer**

- Alkali and efflorescence resistant
- Apply to surfaces with pH of 6 to 13 (as early as 7 days)\*
- Blocks out most stains
- Excellent adhesion to masonry surfaces
- Low temperature application



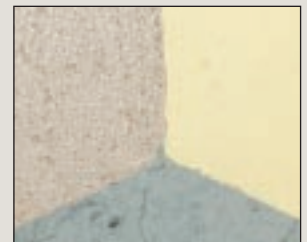
Example of leading competitor substrate with efflorescence (left). Substrate treated with Perma-Crete 4-2 primer (right).



Example of leading competitor substrate with efflorescence (left). Substrate treated with Perma-Crete 4-22 primer (right).



Example of our primer and topcoat over rough concrete.



Example of our primer and topcoat over smooth concrete.

\* See Technical Bulletin for details.



**PERMA-CRETE®**  
MASONRY SYSTEMS

PPG Architectural Finishes, Inc.  
One PPG Place  
Pittsburgh, PA 15272  
www.ppg.com

Technical Services:  
1-800-441-9695  
Architect/Specifier:  
1-888-774-7732  
International Sales:  
(412) 434-2049

PPG Architectural Coatings – Canada  
4 Kenview Blvd.  
Brampton, Ontario  
L6T5E4  
(905) 790-5336  
1-877-238-6441